

Annual summary

Grants overview 2024





We have an obligation
to manage what is
entrusted to us to the
best of our ability.

Ole Kirk Kristiansen
LEGO® company founder



Contents

	Preface	4
	About Ole Kirk's Fond	6
	2024 in figures	8
	60 th anniversary	10
	Mary Elizabeth's Hospital	12
	Social area	14
	Childhood Without Violence	20
	Humanitarian area	22
	Education	24
	Cultural area	26
	Locally	28
	All grants	30

Preface

In 2024, we celebrated a significant milestone: the 60th anniversary of the establishment of Ole Kirk's Fond. The foundation was set up in 1964 to commemorate Ole Kirk Kristiansen, the founder of the LEGO® company.

With a vision of giving back, the foundation's initial focus was on transforming Billund into an appealing residential community and supporting local initiators in their home town. The foundation subsequently broadened its scope to encompass national and global efforts focused on improving the wellbeing of children and their families. This continues to be the guiding principle of the foundation's activities.

Such a milestone presents an opportunity to reflect on the years gone by and the foundation's progress. This retrospective also serves as a reminder of its origin. To this day, the essence of the foundation embodies Ole Kirk Kristiansen's pioneering spirit, innovative thinking, determination and compassion for others – and these enduring values continue to chart the foundation's course.

Over the years, the scale of funding distributed by Ole Kirk's Fond has increased significantly. The foundation remains dedicated to its long-standing ambition of supporting different initiatives, large and small, such as Christmas aid and summer camps, which, although not solving the issues of poverty, make a difference to individual children and their families in the here and now. We also pursue broader systemic change for children through a few carefully chosen signature and development projects, each designed to fundamentally improve conditions for children in Denmark through close collaboration with the Danish public authorities and civil society.

A hallmark of the foundation is our commitment to long-term collaborations and partnerships with other organisations, where we join forces to achieve optimal outcomes for children and young people. Mutual trust is a precondition of our work – irrespective of whether it is a large-scale, million-kroner project or a small donation to people with heartfelt missions.

Our strong and enduring partnership with Rigshospitalet and the Capital Region of Denmark, established in 2016, has led to the development of a ground-breaking hospital for children, young people and expectant mothers. At the beginning of 2024, the final façade elements were installed at Mary Elizabeth's Hospital for children, young people and expectant mothers. The completion of the exterior also symbolised the start of a new phase, with attention now shifting towards the interior of the building and the actual hospital experience. Working closely with patients and staff, the hospital is planning the design of patient rooms, evaluating and adjusting workflows, and developing food concepts and countless other aspects – all with the aim of enhancing the already exceptional quality of treatment and professional expertise focused on the child. This is achieved by way of a holistic approach to treatment that brings specialists to the child's bedside rather than moving the child between departments, and by supporting the entire family at a particularly vulnerable time in their lives.

Another significant milestone for the foundation in 2024 was the creation of a new association that will function as an independent platform for our Childhood Without Violence initiative. The creation of the association is rooted in several years of close collaborative efforts with a broad spectrum of stakeholders: municipalities, the police, educational institutions, health visitors, NGOs, victims of violence and numerous others. United by a com-



We value long-term collaborations and partnerships with other organisations, where we join forces to achieve optimal outcomes for children and young people.

Karin Skjødt Hindkjær
Director, Ole Kirk's Fond



mon purpose, all partners are working collectively to bring down the number of children growing up in families with domestic violence. The association is designed to be a driving force that supports Childhood Without Violence and its multiple stakeholders in implementing tangible collaborative initiatives in the coming years. The association was co-founded by the Bikuben Foundation. Like Ole Kirk's Fond, the Bikuben Foundation focuses on rethinking, challenging and finding new pathways to solutions to complex social issues.

Throughout 2024, we've also celebrated the achievement of numerous milestones in projects of varying scales across all the foundation's funding areas, both locally, nationally and worldwide.

Behind these achievements are passionate initiators and professionals who work tirelessly to build inclusive communities for children, to bring cultural and artistic experiences to children throughout the nation, and to ensure children's basic needs are met when natural disasters occur. We extend our deepest gratitude to everyone involved for their invaluable work.

We hope that the overview of grants in 2024 provides both a comprehensive overview of and detailed insight into the foundation's activities.

Karin Skjødt Hindkjær
Managing Director

Kjeld Kirk Kristiansen
Chairman of the Board

Billund, March 2025



About Ole Kirk's Fond

Founded in memory of the founder of the LEGO® company

Ole Kirk's Fond was set up in 1964 in memory of the founder of the LEGO company, Ole Kirk Kristiansen, to make Billund an attractive place for LEGO employees and their families, and to support the town's local communities.



We further the quality of life for children and their families

Ole Kirk's Fond is a non-profit foundation that works to support children and their families by creating pathways for their positive development and future success.

Our foundation supports a wide spectrum of initiatives, drawing a steady stream of applications for projects, large and small. Every year, these applications result in annual funding for a rich diversity of projects.

In the social area, the foundation also initiates selected projects and serves as a facilitator for larger transformative initiatives. All united by one common purpose: To further the quality of life for children and their families.

Mutual trust is a precondition of our work with different organisations – from complex, large-scale projects to more modest donations to people with heartfelt missions.

Funding areas of Ole Kirk's Fond



Social area

Social initiatives constitute the foundation's largest funding area. We fund projects assisting vulnerable and disadvantaged children, as we are particularly focused on them. At the same time, we are part of the broad, preventive efforts that enhance children's wellbeing and life chances.

Childhood Without Violence

In 2023, Ole Kirk's Fond launched a long-term systemic programme – known today as Childhood Without Violence – to confront the complex issue of domestic violence. The programme evolved into an independent association in 2024, bringing together leading professionals from both private and public organisations across various sectors to reimagine support systems for children and families affected by violence. The mission is to create lasting solutions firmly rooted in systems that can help prevent violence before it occurs, deliver targeted support when it does, and help reduce the number of children exposed to domestic violence during their childhood.



Humanitarian area

The foundation primarily supports humanitarian work based on two funding collaborations with permanent partners. The funding pools both address the acute needs that arise in connection with man-made or natural disasters.



Education

The foundation supports training and educational initiatives that bring children and young people together around communities and dissemination. The foundation also has a long tradition of awarding travel bursaries to students of educational theory and practice who will be travelling abroad to work with children.



Cultural area

The foundation supports cultural projects which benefit many people – particularly projects developed with and for children, which provide frameworks for positive interactions.



Locally – Billund

The foundation supports local initiators in Billund Municipality who contribute to the community through their ideas, enthusiasm and local involvement.



Mary Elizabeth's Hospital

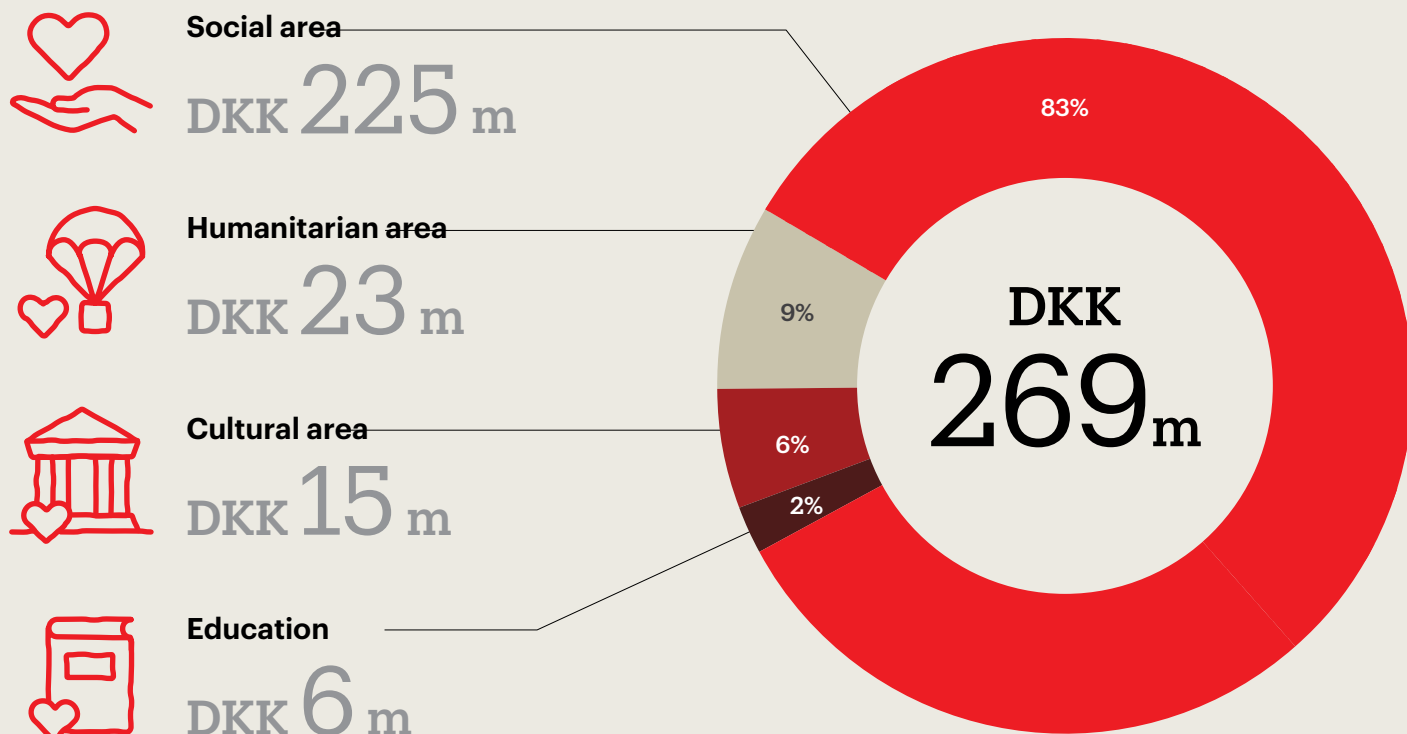
Over the past nine years, Ole Kirk's Fond has maintained a close partnership with the Capital Region of Denmark and Rigshospitalet to develop a ground-breaking hospital for children, young people, expectant mothers and their families. The development of Mary Elizabeth's Hospital within Rigshospitalet aims to benefit the entire Danish healthcare system. Beyond providing nearly a third of the total funding for the hospital construction – with a significant portion dedicated to enhancing the user experience – Ole Kirk's Fond also contributes with professional resources and expertise in fields such as design, innovation and play.



2024 in figures



Level of grants per funding area in 2024



Approved applications

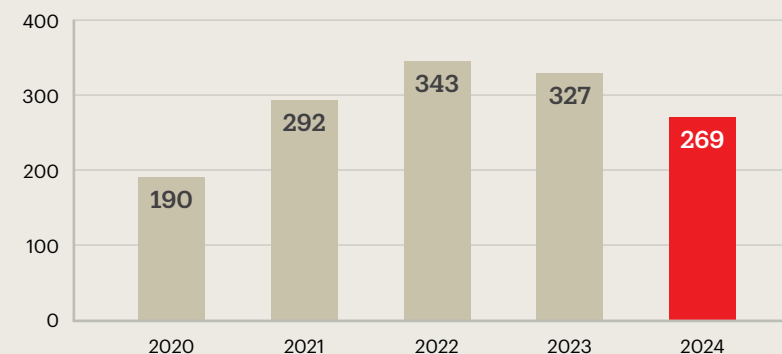
317



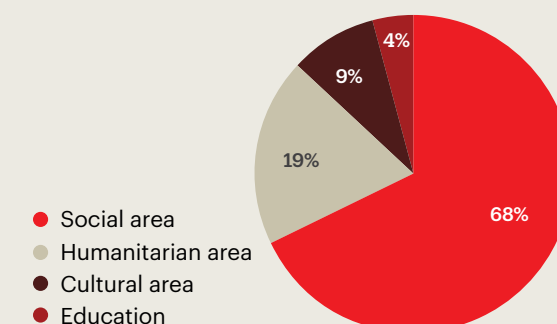
Number of applications

659

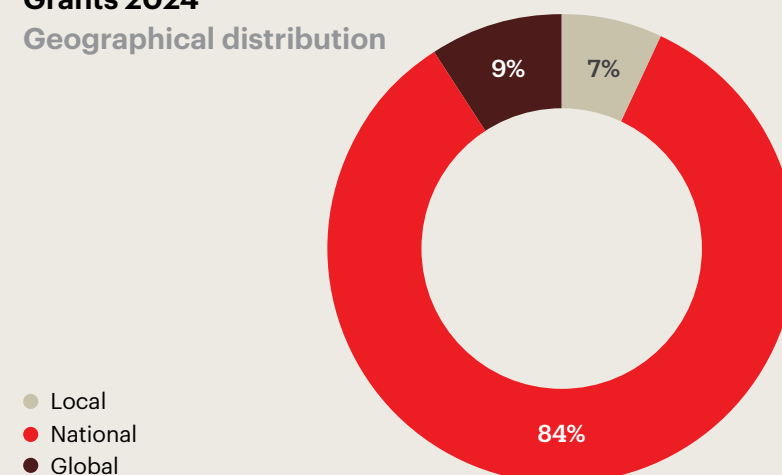
Level of grants 2020–2024 DKK m



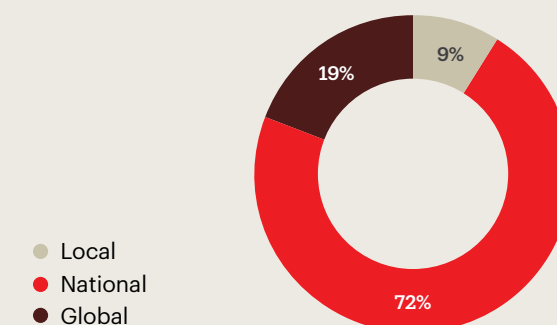
Average grant distribution 2020–2024



Grants 2024 Geographical distribution



Geographical average 2020–2024



The foundation's funds

The foundation's grants are made possible by the profit generated by the employees of the LEGO Group and KIRKBI. In addition to generating modest returns from its original capital, Ole Kirk's Fond has, over the years, received funding from the LEGO Foundation and from the Kirk Kristiansen family's holding and investment company, KIRKBI.

In 2024, Ole Kirk's Fond received DKK 240 m from the LEGO Foundation. The return on investment was DKK 32 m. All of the foundation's administrative costs are borne by KIRKBI.

Funds from the LEGO Foundation
(25% ownership of LEGO Group)

Funds from KIRKBI A/S
(75% ownership of LEGO Group)

Investment return
from original capital

Ole Kirk's Fond

We support projects and enter into partnerships, where working together makes us stronger, enabling us to improve the quality of life for children and their families.



60th anniversary

Ole Kirk's Fond was set up in 1964 to commemorate Ole Kirk Kristiansen, the founder of the LEGO® company. As the oldest foundation within the LEGO ecosystem, we remain, 60 years after our founding, dedicated to making a meaningful difference for people – particularly children and their families – not just in our home town of Billund, but nationally and globally, too.

For the first 20–30 years of its existence, Ole Kirk's Fond did not attract much attention to itself. The archives contain few records about the foundation from that period. This absence of records does not, however, indicate inactivity, but rather that the foundation simply chose, at the urging of its first board chairman, Godtfred Kirk Christiansen, not to publicise its support efforts, either in the press of that era or within the local community.

The minutes of board meetings from the foundation's early years reveal both extensive activity and a broad spectrum of grant recipients, ranging from a few hundred kroner given to a widow in connection with a funeral to study loans and donations to the local schools. The foundation also provided funding for diverse cultural and recreational activities in Billund and its surrounding areas, including an outdoor swimming pool, a scout hut and the establishment of the Billund Center, which, 50 years after its opening, continues to serve as a community hub, housing a library, cafeteria and church for the enjoyment of local residents.

From local to national involvement

At its founding in 1964, the foundation concentrated primarily on Billund and its surrounding areas. The aim was to develop Billund into an appealing residential community. With the LEGO Group's expansion and international aspirations came a heightened need to attract fresh talent. As applications began arriving from all over Denmark, the foundation's grant activities rapidly expanded beyond the local municipality. This was particularly

the case in the social area, supporting organisations such as KFUM's Sociale Arbejde (Social work of the YMCA) and Kirkens Korshær (DanChurch-Social), along with holiday camps and Christmas aid, which the foundation has continued to fund every year.

Substantial growth over the past decade

Throughout the 1990s and 2000s, the foundation started to become more transparent and take a more proactive approach in sharing information about the worthwhile projects receiving its financial support. At this point in time, the foundation remained exclusively application-based. Only in the past decade has the foundation shifted towards a more active partnership role and increased involvement, particularly in the social area.

Raising the bar of ambition – Mary Elizabeth's Hospital

In 2016 and in the years leading up to it, the foundation shifted gear economically, organisationally and strategically. Thoughts on increased involvement in development projects began to take shape, and Ole Kirk's Fond launched what would become a landmark partnership for the foundation in establishing the new children's hospital alongside Rigshospitalet and the Capital Region of Denmark.

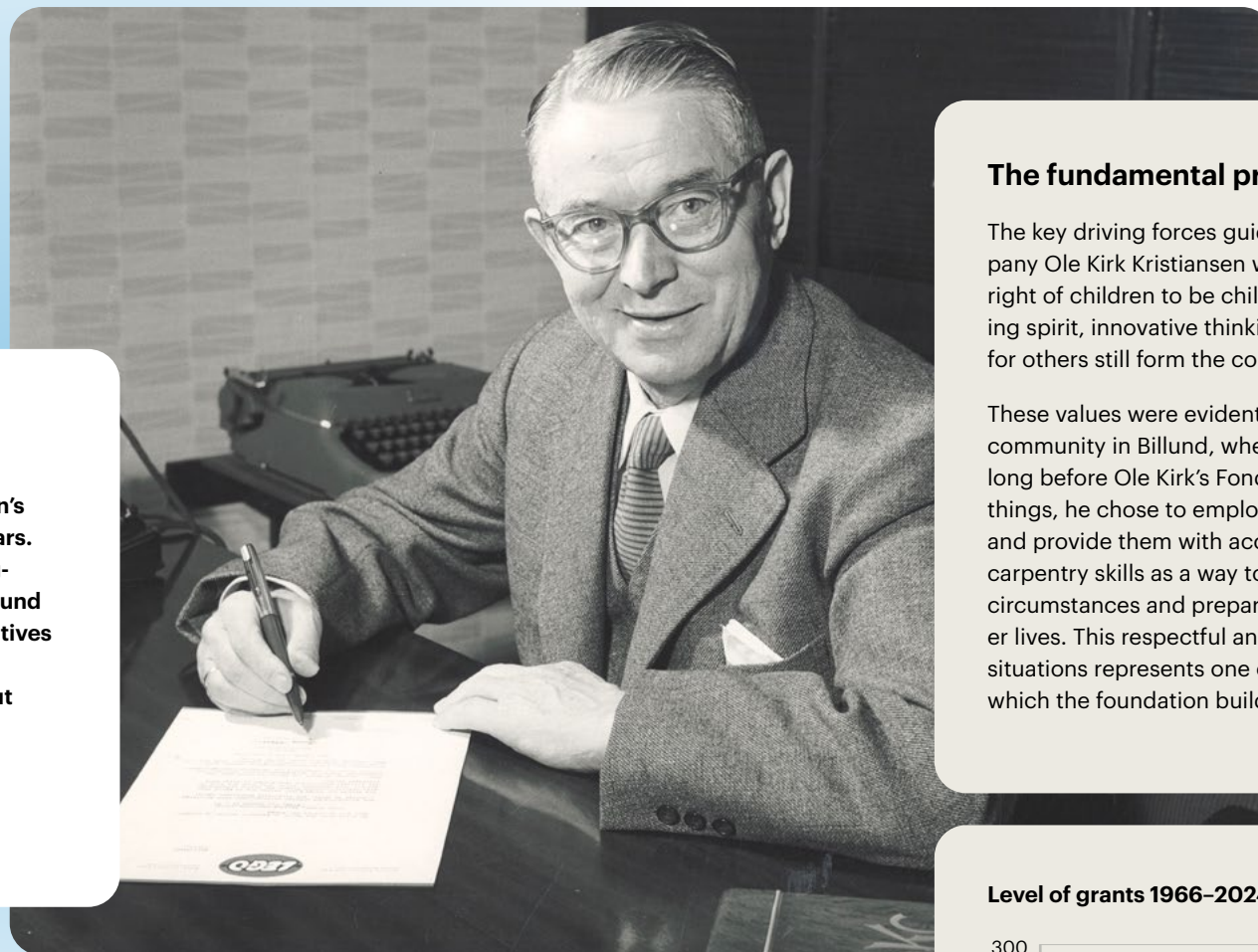
The foundation allocated its first significant grant to the project in 2016, and in the eight years since



As Chairman of the Board of Ole Kirk's Fond, I take great pride in having participated in the foundation's extraordinary journey of development over the years. Here, I particularly reflect on the foundation's long-standing contributions to local communities in Billund as well as its growing involvement in broader initiatives that help create safe surroundings, wellbeing and development opportunities for children throughout Denmark.

Kjeld Kirk Kristiansen

Chairman of the Board, Ole Kirk's Fond



the project's inception, the total grant has amounted to almost DKK 1 billion – roughly a third of the overall budget for the construction.

Before embarking on the ground-breaking Mary Elizabeth's Hospital project and collaboration, the foundation had undergone financial restructuring. With support from the LEGO Foundation, the level of funding had risen dramatically, bringing with it the ambition to help even more children and families. This period saw the foundation sharpening its distribution strategy, establishing clearer focus areas and priorities for its allocations. From 2016 and onwards, the development of a formal organisational entity within the foundation also began. Additional resources were progressively allocated to the foundation, and a director was appointed.

Besides the director of Ole Kirk's Fond, the foundation presently consists of seven staff members, all of whom contribute to the day-to-day operations in their respective ways. The foundation also receives administrative support from KIRKBI as and when required.

Still honouring its history

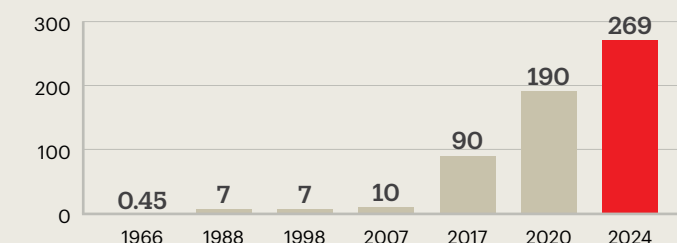
In its current form, Ole Kirk's Fond continues its application-based funding model while engaging

The fundamental principles

The key driving forces guiding the founder of the LEGO company Ole Kirk Kristiansen were compassion and the universal right of children to be children. Ole Kirk Kristiansen's pioneering spirit, innovative thinking, determination and compassion for others still form the core of the foundation's mission.

These values were evident in Ole Kirk's involvement in the local community in Billund, where he owned a carpentry business, long before Ole Kirk's Fond came into being. Among other things, he chose to employ young men from a children's home and provide them with accommodation. He saw teaching them carpentry skills as a way to help them overcome their difficult circumstances and prepare them for independence in their later lives. This respectful and compassionate stance towards life situations represents one of the fundamental principles upon which the foundation builds its work.

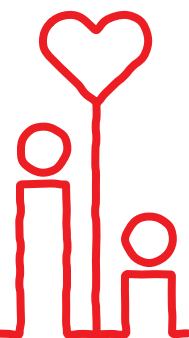
Level of grants 1966–2024 (DKK m)



For the first many years after its establishment, the foundation's level of grants was relatively modest. Over the past decade, the level of grants has, however, increased dramatically, coinciding with Ole Kirk's Fond receiving funds from the LEGO Foundation, paving the way for its involvement in more comprehensive initiatives and development projects.

in development projects alongside Danish organisations – predominantly in the social area – while also engaging as a proactive partner in large-scale, systemic projects and initiatives such as the development of Mary Elizabeth's Hospital and the Childhood Without Violence initiative.

Honouring and building upon the foundation's unique heritage, Ole Kirk's Fond will continue its efforts to provide children and families with the best possible conditions for them to thrive and realise their potential – with a particular focus on the most disadvantaged children who require additional assistance and support.



Mary Elizabeth's Hospital

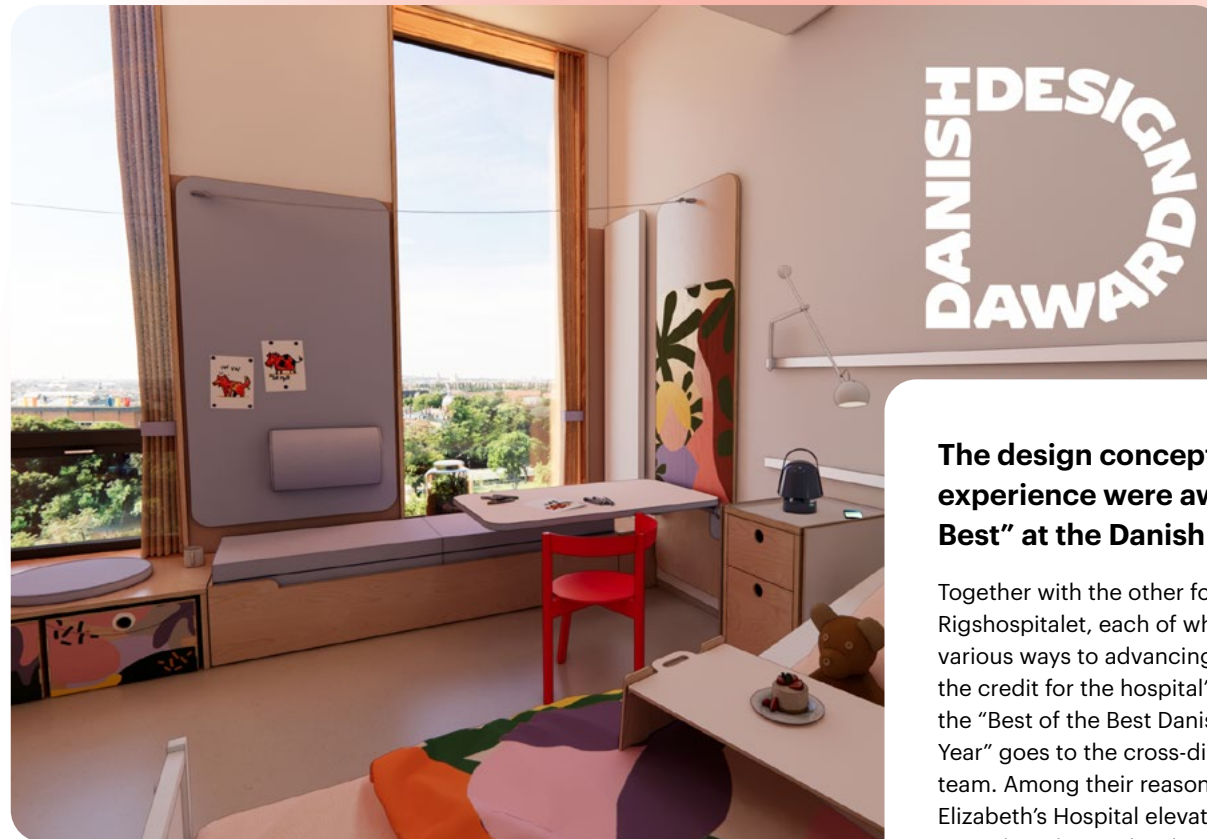
Rigshospitalet for Children, Teens and Expecting Families.

Ole Kirk's Fond, the Capital Region of Denmark and Rigshospitalet have joined forces to develop a ground-breaking hospital, where new ideas will be implemented to form a cocoon around families at a vulnerable time in their lives.

In 2024, with the new hospital now fully clad with its exterior façade, the team of more than 200 tradespeople involved with its building on a daily basis has moved inside to work on all interior elements, including the technical installations. Consequently, the project will move into its final stage at the end of 2024, focusing on quality assurance and preparation of all internal facilities such as operating theatres, patient rooms and other communal spaces.

A unique public-private partnership

The establishment of Mary Elizabeth's Hospital is the result of a strong, strategic partnership between Rigshospitalet, the Capital Region of Denmark and Ole Kirk's Fond. Rigshospitalet brings world-class medical expertise and treatment capabilities along with patient-focused insights. Besides having the political courage to innovate and bring to life the vision of creating a more human-centred healthcare system that embraces play and compassionate care, the Capital Region of Denmark brings expertise in construction and project management to the partnership. As a foundation, we have provided funding amounting to almost a third of the project's entire budget and additionally we contribute with professional resources and expertise in fields such as design, innovation and play. Working together, we have laid a solid foundation for the establishment of Mary Elizabeth's Hospital.



The design concepts for the hospital experience were awarded "Best of the Best" at the Danish Design Award 2024.

Together with the other formidable talents at Rigshospitalet, each of whom have contributed in various ways to advancing the hospital experience, the credit for the hospital's design concepts winning the "Best of the Best Danish Design Award of the Year" goes to the cross-disciplinary in-house design team. Among their reasons, the jury stated that "Mary Elizabeth's Hospital elevates patient pathways into something beyond a clinical experience – becoming transformative, meaningful and human-centred".



The vision we share with Rigshospitalet and the Capital Region for Mary Elizabeth's Hospital is to rethink the hospital experience by developing a holistic healthcare facility that combines world-class clinical treatment with exemplary support for children and families, enabling them to continue living their lives – even during times of illness. The design concepts do exactly that. On behalf of the many committed individuals who have contributed to the hospital experience over the years, including design specialists from the LEGO ecosystem, we are immensely proud that the project and its concepts have now been recognised with a Danish Design Award.

Lars Hyldgaard Olesen

Mary Elizabeth's Hospital Programme Director,
Ole Kirk's Fond

Complete concept design for the hospital experience

Our partnership has placed significant emphasis on incorporating user experience principles into the hospital environment, with the goal of establishing Mary Elizabeth's Hospital as a human-centred institution which, in addition to providing world-class clinical treatment, provides exemplary support for children and families, enabling them to continue living their lives while they are ill. The extra funding we provided in 2021 for the user experience at Mary Elizabeth's Hospital has reinforced this particular focus and made it possible for Rigshospitalet to establish its own in-house design team. The team works diligently and systematically to develop and implement design concepts founded on users' requirements

It is therefore also gratifying to us that 2024 marked the year when the complete concept design for the hospital experience was finalised. The concept is the product of the collaborative efforts of the cross-disciplinary design team – a team comprising architects, anthropologists, service designers, product designers and play designers. The focus of the concept extends beyond individual, high-quality components to creating an integrated holistic experience for those using the hospital. The design philosophy at Mary Elizabeth's Hospital is open-ended and test-driven, ensuring that solutions are developed and evaluated right up until the opening of the hospital. The development will not stop once the hospital becomes operational, but further initiatives will be developed to ensure the hospital experience continues to meet the users' needs.

Exhibition at Industriens Hus

A new exhibition about the hospital opened at Industriens Hus in September 2024. Open to all interested parties, the exhibition gave visitors a window into the vision that we are currently bringing to fruition in a unique collaboration with Rigshospitalet and the Capital Region of Denmark. Her Majesty Queen Mary was present at the opening of the exhibition, which was made possible by the support of Børneriget Fonden – the Foundation for Mary Elizabeth's Hospital.

Facts about Mary Elizabeth's Hospital

- 60,000 m² spread over eight floors with 179 private rooms, 87 outpatient rooms and 15 operating theatres.
- The hospital is being established as a new building within the Rigshospitalet complex in Copenhagen with capacity for more than 900 inpatients and outpatients as well as their families.
- Some 1,200 healthcare professionals including doctors, nurses, midwives and other staff will work at the new hospital.
- The patients will come from all over Denmark, Greenland and the Faeroe Islands.
- Mary Elizabeth's Hospital is scheduled to open its doors to the first patient in 2027.



Social area

The social area holds a place of special importance in Ole Kirk's Fond and is the foundation's largest funding area. The focus here is on projects which help vulnerable and disadvantaged children – without forgetting our widespread, preventative efforts to strengthen children's wellbeing and opportunities for development in general.

In addition to 'Children living in families with domestic violence', which is the primary focus area of the foundation, we also prioritise projects and initiatives in four other areas:

- Children living in families with addictions
- Children of parents suffering from mental illness
- Babies and toddlers in vulnerable families
- Children and young people's wellbeing

The foundation provides funding for projects of all sizes within the aforementioned areas. For certain projects, the foundation is particularly involved in collaborations designed to build effective and durable support systems for children and young people.



An extra helping hand


Not all families have the finances or resources to take their children on holiday, to buy new school bags when they start school, or to give their children the Christmas they'd like to give them. Ole Kirk's Fond has a well-established practice of lending an extra helping hand to children from financially disadvantaged families, for whom occasions such as starting school, the summer holidays and festive seasons can be extra tough.

In 2024, the foundation approved grants totalling approximately DKK 20 m for starting school support, scholarships, Christmas aid and holiday camps.




Counselling for young people showing early signs of eating disorders

Foreningen Spiseforstyrrelser og Selvskade (The Danish National Association for Eating Disorders and Self-Harm) provides support to children, young people and their parents via their nationwide telephone helpline, which is now being extended to include online chat support. The prevalence of self-harming behaviour and eating disorders has risen in recent years, coinciding with deteriorating mental wellbeing among children and young people. Statistics show that both girls and boys are affected, with an increasing number experiencing their first episodes of self-harm or eating disorders between 12 and 15 years of age. The association foresees a continued increase in the number of enquiries, which will amplify the need for earlier intervention efforts and more extensive counselling services. Ole Kirk's Fond supports the association's activities through operational funding of its counselling services and funds for the development of a preventive family programme for young people showing early signs of eating disorders.

 **DKK 4,000,000 and DKK 1,660,000**

New materials for young people suffering from anxiety

Many children and young people suffering from anxiety benefit greatly from the Cool Kids treatment programme. With funding from the foundation, the Department of Psychology at Aarhus University has obtained resources to develop new visual communication tools for the programme. Cool Kids is a science-based anxiety treatment programme designed for children aged 7–12 and teenagers aged 13–19. The programme provides both children and their parents with practical methods and strategies through structured sessions designed to help them overcome and handle anxiety and worries in their everyday lives. While initially developed in Australia, the programme has been refined and contextualised for Denmark by Aarhus University.

 **DKK 1,048,000**

Support groups for children of a parent serving a prison sentence

SAVN, an association for relatives of prisoners, has been granted funding to develop and establish support groups for children between the ages of 7–14 who have a parent in prison. In Denmark, around 4,000 children have a mother or father serving time in prison. For these children, the parent's imprisonment often leads to profound changes in their lives, presenting emotional and social obstacles that affect their functioning in school and free time. Many of the children feel a sense of shame about the situation. They worry about being linked to their parent's criminal actions and experience the social prejudice that frequently impacts families of incarcerated individuals. SAVN's pilot project seeks to counter these challenges by forming children's support groups in five Danish towns and cities. This initiative aims to provide these children with a secure environment where they can get help in coping with the predicament they are in.

 **DKK 2,285,000**



Social initiatives spanning several years

Ole Kirk's Fond has a long-standing tradition of ensuring that initiatives are firmly rooted and broadly disseminated. For this reason, we maintain enduring partnerships with relevant organisations, providing funding across multiple grant periods.

In such partnerships, the foundation often delivers a combination of monetary support and professional and strategic input. On these pages are four examples of programmes that received renewed funding from the foundation in 2024:

Support groups for children in families with mental illness

A significant number of children and young people in Denmark are raised in households where a parent or sibling suffers from mental illness. As members of a particularly vulnerable demographic, these children and young people face disproportionately high risks of encountering social and educational challenges compared to their peers. For more than half of these children, there is an increased probability of them developing a mental illness themselves. Supported by Ole Kirk's Fond and working alongside three municipalities, Bedre Psykiatri (better psychiatry) has designed and tested the "Family-based support groups" initiative for children in families with mental illness. Eight further municipalities are set to adopt the children's support groups as part of the project's continuation through 2025-2026.


Read more at www.bedrepsykiatri.dk

 **DKK 5,000,000**

Tried-and-tested wellbeing initiative extends its reach to more than 200 schools

The *Basal – sammen om trivsel* wellbeing initiative serves to bolster mental health among school children in lower secondary education. Early evidence from the 49 schools participating in the pilot programme confirms this. The initiative, developed and tested by the Danish Committee for Health Education from 2021 to 2024, builds upon several of the committee's evidence-based strategies for coping with everyday situations. With combined support from Ole Kirk's Fond, the Nordea Foundation, and the Novo Nordisk Foundation, the programme will continue its expansion from 2024 to 2029. The next grant period will see Basal expand to serve upwards of 200 schools and 16,000 school children in lower secondary education, while maintaining its core objective of bolstering the mental health and wellbeing of pupils.

Read more at www.sammenomtrivsel.com

 **DKK 10,000,000**



Strengthened social networks boost wellbeing and motivation among young girls

The "Sisterhood" pilot scheme, developed by GirlTalk in 2019, was designed as a targeted wellbeing initiative for girls aged 15-18 attending secondary schools and vocational training programmes. The initiative aims to strengthen social networks among girls and young women, enhancing their educational experience and lowering attrition rates. Following 18 months of testing and fine tuning, the initiative has yielded encouraging signs regarding the wellbeing of the target demographic. A renewal of the grant to the association was approved by Ole Kirk's Fond in 2024. The new project period, which runs until mid-2027, will, among other things, evaluate whether the initiative has the desired effect. The goal going forward is to increase Sisterhood's scope and secure its financial foundation within vocational education programmes, and widen its reach to encompass more vocational training institutions throughout Denmark.


Read more at www.girltalk.dk

 **DKK 6,850,000**

Fri for Mobberi (free from bullying) – renowned anti-bullying programme nears 20-year milestone

Launched in 2007, Fri for Mobberi is the product of a partnership between The Mary Foundation and Save the Children. Today, around 60 percent of all Danish nurseries, kindergartens, schools and after-school programmes have implemented Fri for Mobberi. Involved with the project from day one, Ole Kirk's Fond has provided more than DKK 25 m in total funding to this well-integrated anti-bullying programme. Educational tools provided by the programme facilitate methodical and targeted efforts by childcare professionals, kindergarten staff and teachers to enhance group cohesion and prevent bullying among children up to 9 years of age. The foundation will maintain its support for both the ongoing operations and continued expansion of the programme from 2024-2027.

Read more at www.friformobberi.dk

 **DKK 5,987,000**





We further the
quality of life
for children
and their families

Ole Kirk's Fond

Childhood Without Violence

With the Childhood Without Violence initiative, Ole Kirk's Fond will work over a 10-year period to tackle the complex problem of domestic violence against children.

The fact that many children in Denmark are either subjected to or witness violence within their family is a matter of grave concern.

Such violence can have long-term detrimental effects on the child's physical and mental health, development and general wellbeing. The violence frequently occurs behind closed doors, making it difficult for the children to get help. Research indicates that two to four pupils in every classroom currently experience domestic violence, yet only 10 percent of these children are identified and supported – a statistic that Childhood Without Violence wishes to do something about.

Working closely with leading professionals and organisations spanning both private and public sectors, the initiative seeks to rethink existing support systems for children and families impacted by violence. Working with experts in this field, the initiative aims to develop enduring solutions firmly embedded within systems that can both prevent violence before it occurs and provide targeted support when it does. The ultimate aim is to reduce the number of children exposed to domestic violence during their childhood. Over the past year, the Childhood Without Violence initiative has focused on working with relevant stakeholders to gain insights into domestic violence and develop a fundamental grasp of its complex dynamics.

One consolidated field of expertise – against violence

Childhood Without Violence has engaged in widespread visits spanning the entire country



Violence stems from complex social, economic and psychological factors that no single stakeholder working in the field of violence can address alone. If we as a society are to succeed in breaking the cycle of violence and creating safe and supportive environments for children, we need to start working together in unprecedented ways and develop new, innovative and sustainable solutions together. This is far easier said than done, but it is nevertheless the complex undertaking we are committed to within the Childhood Without Violence initiative.

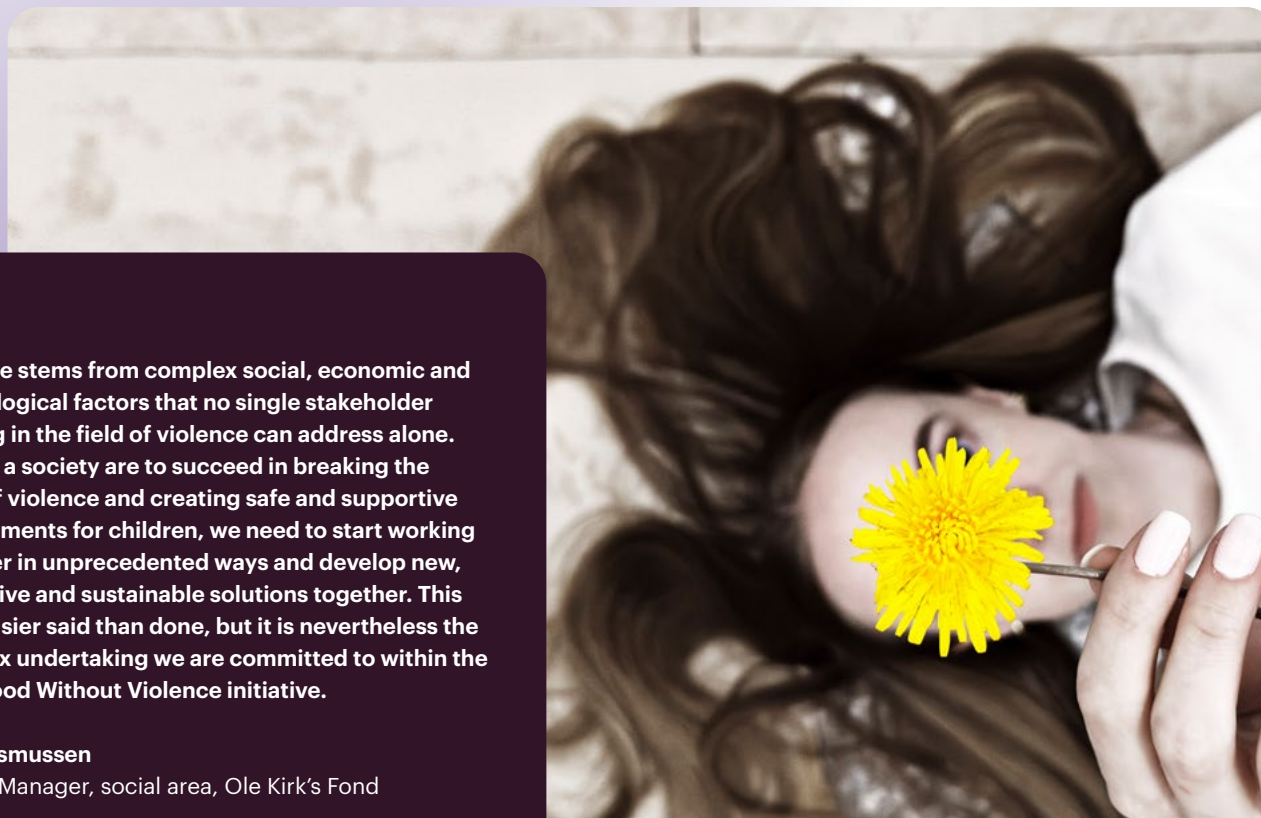
Line Rasmussen

Project Manager, social area, Ole Kirk's Fond

and crossing sectoral boundaries to uncover the diverse range of perspectives on domestic violence. The insights gathered have been presented at meetings with stakeholders, which have also served to unite them, building a firm foundation for future collaborative solutions. By way of a parallel initiative, Childhood Without Violence and various stakeholders have cooperated with the Danish Authority of Social Services and Housing to formulate a collective national understanding of the difficulties within the domestic violence domain.

Stakeholder statements

“Being part of the interdisciplinary partnership between public authorities and civil society stakeholders has been quite an eye-opener. The broad coalition of stakeholders gathered by Childhood Without Violence has facilitated interpersonal connections and cultivated both a collective appreciation of the problem's extent and a shared vision for potential solutions. I'm now seeing important patterns that weren't evident to me before. These patterns aren't addressed by the existing system, which is why my involvement with Childhood Without Violence has demonstrated to me that systemic changes are necessary to improve support for children affected by violence. The initiative has also inspired me to forge a new and stronger collaborative relationship between the police and municipalities, which can ultimately contribute to the prevention of domestic violence,” explains



Svend Foldager, chief superintendent of the North Zealand Police.

“Collaborating with committed and informed stakeholders under the Childhood Without Violence initiative has deepened our collective understanding of violence against children. This has further clarified for me the inadequacy of existing approaches and highlighted the necessity for both increased and innovative forms of collaboration to improve support for children subjected to violence,” says Elsebeth Kirk Muff, director of Lev Uden Vold (Life without violence).

In short

Following several years' groundwork, Ole Kirk's Fond launched an independent association in 2024 that will function as a platform for the initiative. The association was co-founded by the Bikuben Foundation, which, like Ole Kirk's Fond, is committed to driving systemic change.

The association consists of a small independent secretariat, with Lisbeth Jessen at the helm as director. The association was awarded a comprehensive grant of DKK 50 m in 2024, covering both its operational costs for the initial five-year period and the launch of change-driving activities in the years ahead.

Read more at barndomudenvold.dk

Kh Børnene (Love from the children) – New book features eight young people's accounts of childhood violence.

In 2024, Childhood Without Violence initiated the development and creation of “Kh Børnene,” a book in which young adults use artistic means to share their experiences of childhood violence. A singularly poignant and agonising portrait of childhood dominated by violence, menace and extreme neglect emerges through these young people's accounts.

Several of the young authors read out excerpts from the book at its launch, which took place at the National Museum in Copenhagen in September. The event's guest speaker Peter Hummelgaard, Minister for Justice, thanked the young people for making their voices heard. Also present were professionals and stakeholders from public and private organisations dedicated to combating violence and neglect in their everyday work. Kh Børnene is published by the publishing house Ordskeælv in partnership with Poesiens Hus and with the financial support of Ole Kirk's Fond.

“Kh Børnene aims to heighten the awareness of professionals involved in preventive work or those who have contact with children and young people who may be victims of domestic violence. Now that these children have shared their previously untold stories in Kh Børnene, it is up to us, both as a welfare society and as responsible adults, to respond by listening carefully and mustering the courage to implement the systemic changes needed,” says Lisbeth Jessen, director of the association Childhood Without Violence.

Other support for violence intervention initiatives

Alongside its DKK 50 m grant to the Childhood Without Violence association, in 2024 Ole Kirk's Fond extended support to the following large-scale projects addressing children living in families with domestic violence.

- University of Copenhagen, Department of Forensic Medicine – The lost children: systematic forensic examinations of children in suspected cases of violence (DKK 3,400,000)
- LOKK – National Organisation of Women's Shelters – Quality model for child support activities at Danish shelters (DKK 1,730,000)
- University College Absalon – Pre-analysis of AI conversation simulator (DKK 3,549,000)
- Fonden Mødrehjælpen (mothers' aid foundation) – Out of the Shadow of Violence: treatment programme for children subjected to violence (DKK 2,525,000)
- The Mary Foundation – Backpacks for children arriving at shelters (DKK 3,730,500)



Humanitarian area

The foundation primarily supports humanitarian work based on two funding pools that the foundation continuously replenishes. Both funding pools address the acute needs that arise in connection with man-made or natural disasters.

A unique partnership providing humanitarian support

In 2017, Ole Kirk's Fond, in partnership with DRC Danish Refugee Council, created a new cooperation model for humanitarian action with the establishment of the Acute Funding Pool.

The Disaster Funding Pool was later established in collaboration with the Danish Red Cross. This pool is mobilised in the event of natural disasters. The two emergency pools are continuously replenished and remain operational.

In 2024, the cooperation agreement with DRC Danish Refugee Council was renewed with the allocation of DKK 20 m over a 2-year period.

The principles behind the funding pools

The basic principles behind both funding pools are speed and agility. The funds can be mobilised at very short notice for acute and life-saving humanitarian aid. The preconditions for fast action are a comprehensive cooperation agreement, a high degree of trust and regular, close dialogue between us and our partners.



The Acute Funding Pool



The Disaster Funding Pool

Syria

Conflict – internally displaced
DKK 985,000



Lebanon

Conflict – internally displaced
DKK 3,500,000



Niger

Floods
DKK 1,050,000



Chad

Conflict – internally displaced
DKK 2,500,000



Afghanistan

Floods
DKK 1,000,000



Nepal

Floods
DKK 950,000



Bangladesh

Floods
DKK 1,655,000



Sudan

Civil war and food shortages
DKK 2,000,000



Kenya

Floods
DKK 1,075,000



Malawi

Floods
DKK 1,050,000



Sadly, the need for acute humanitarian aid has not decreased since we initially established the two funding partnerships.

The trusting relationship we maintain with the Danish Refugee Council and the Danish Red Cross is something we deeply appreciate, and we are proud of our foundation's exceptional flexibility and ability to ensure that aid reaches those in need quickly – even for initiatives that typically struggle to secure funding from other sources.

Karin Skjødt Hindkjær
Director, Ole Kirk's Fond



Education

We provide smaller-scale support for training and educational initiatives that bring children and young people together around communities and dissemination. In 2024, we provided funding for a couple of large-scale national projects as well as a number of smaller projects.

The foundation has also traditionally supported students of educational theory and practice who will be travelling abroad to work with children in educational settings that differ from those they are used to in Denmark. In 2024, the foundation awarded a total of 122 study travel bursaries to young students of educational theory and practice from all over Denmark through collaboration with University College South Denmark and by awarding grants directly to the students.

UNF's ScienceCamps 2024

The Danish Youth Association of Science (UNF) seeks to boost and maintain young people's enthusiasm for science. Over the past two decades, the association has hosted a series of ScienceCamps, where young people explore the many facets of science while becoming part of a social community with their peers. In 2024, there were six different camps: Physics Camp, Mathematics Camp, Machine Learning Camp, Game Development Camp, Chemistry Camp and Health Science Camp. This is the fifth time that Ole Kirk's Fond has supported UNF's Science Camps.

 **DKK 50,000**

Seeing the world at eye level

Through its cultural-historical education project, the association Jelling Heritage brings Denmark's religious transition – from Norse mythology to Christianity – to life for schoolchildren and young people being confirmed. The project seeks to convey world heritage in a way that makes an often-distant and complex historical period more relatable and comprehensible. Ole Kirk's Fond has supported the development of educational materials, including an information board and a podcast series that explore Denmark's religious transition during the reign of Harald Bluetooth, framing it within a religious, cultural-historical and political context.

 **DKK 150,000**



Experimentarium's "Super-krop!" (Super body) exhibition

Children and young people's development is closely linked to their bodies and health habits, yet they often receive advice that is too abstract and difficult to relate to in everyday life. Experimentarium aims to change that with "Super-krop!", an exhibition that makes the body's complex systems fun and easy to understand for children and their parents. The exhibition will be a shared learning community, where visitors actively interact, engage their senses and reflect on the exhibition's content. Through play and activities, the exhibition aims to increase visitors' understanding of nutrition, exercise and breathing, etc. while encouraging positive experiences with and reflections on their own health and bodies. Ole Kirk's Fond has supported the exhibition alongside other Danish foundations.

 **DKK 2,990,000**



Cultural area

We support cultural projects benefiting many people, and prioritise projects developed with and for children, and which provide a good framework for communication and positive interaction.

Grants of varying sizes have once again been awarded in the cultural area this year. For most of the projects, the common denominator continues to be that they are projects that bring children and young people together in communicating stories and topics relevant to society as well as other common interests involving music and culture, for example.

The Royal Danish Collection educates children about the history of the monarchy

A permanent, new children's universe, KONGEBARN, is set to open at Koldinghus. The exhibition is designed to engage children at their level, allowing children of various ages to explore the history of the monarchy – and their own – through play. The experience invites them to engage physically by crawling, climbing, and exploring, while also delving into history through sound, animation and visual storytelling. Ole Kirk's Fond, together with several other foundations, has supported the exhibition, which will open in 2025.

 DKK 1,000,000

More art for children in rural areas and smaller towns

Kunst ud til Folket (Bringing art to the people) is an association dedicated to bringing art to rural areas in an inclusive and accessible way. Since 2018, they have worked with more than 100 municipal primary and lower secondary schools and 30 municipalities to find new ways to enrich children's play, education and wellbeing through the existing artistic and cultural resources within their local communities. Taking children's terms and needs as its starting point, the association is bringing its play and storytelling formats to even more children in small towns, ensuring they can enjoy the local art. The grant from Ole Kirk's Fond will enable the association to initiate activities in at least 27 towns.

 DKK 1,400,000

Svendborg Museum explores the untold fates of those who lived in the poorhouse

The "Underdanmarks tavse skæbner" (the silent voices of Denmark's underprivileged) exhibition at Danmarks Forsorgsmuseum (the Danish Welfare Museum) sheds light on the lives of those who once lived at Svendborg poorhouse. It is Svendborg Museum's largest exhibition and storytelling project to date. Designed for visitors of all ages, including children and young people, the project brings together the preserved buildings and original indoor and outdoor spaces of the poorhouse, offering visitors a chance to walk in the footsteps of its former residents and experience their lives before, during and after their time there. Set to open in 2026, the exhibition is mainly financed by three major Danish foundations, with Ole Kirk's Fond contributing additional funding for educational materials.

 DKK 100,000



Locally

We support local initiators who contribute to our community through their ideas, enthusiasm and local involvement, bringing joy to many people, particularly children and young people, in and around Billund Municipality.

Once again this year, the foundation has allocated grants to a wide range of local projects. The common feature of many of the grants is that they are given to projects that support culture and leisure in local communities. In addition, the foundation supported many projects during the year that help create a positive environment and experiences for local people who are vulnerable or disadvantaged.


Supporting vulnerable families at Jydepotten

Café Jydepotten in Grindsted is open to everyone. More than just a social gathering place, it also serves as a place to eat for single residents in the town and nearby communities. The venue, which is part of Social work of the YMCA, provides a cosy setting for companionship and togetherness. Ole Kirk's Fond remains a committed supporter of Café Jydepotten's initiatives aimed at assisting vulnerable and socially disadvantaged families. In 2024, the fund has allocated funds to support Christmas aid, holiday camps and ongoing family initiatives.

 **DKK 250,000**

Filskov Kultur- og Aktivitetshus (culture and activity centre) – Renovation of Viadukthallen

Run by volunteers, Viadukthallen is a vibrant sports hall buzzing with activity. After nearly two decades of activity, the association is giving the hall a makeover to bring in more light, open spaces and better facilities for small group activities and meetings. The renovation will also include modernising the entrance and cafeteria, ensuring a more inviting experience for its users. The aim is to make the sports hall accessible to even more residents while preserving its role as a natural communal hub for the people of Filskov. Ole Kirk's Fond has provided financial support, which has been supplemented by the association's own funding and the voluntary efforts of many local residents.

 **DKK 2,500,000**



MarkMobilen

With the MarkMobilen storytelling project, the Museums of Billund Municipality aim to offer a mobile history universe that can visit schools across the municipality. An adapted vehicle and trailer, MarkMobilen is a mobile storytelling universe that visits schools, drawing 1st to 6th graders into a world of characters, pictures, and icons.

By meeting children on their own turf, the project aims to make history come alive through learning and play, disseminating aspects of modern Danish and local history, spanning agriculture, industry and tourism. The storytelling is based on a superhero universe, adapted to different age groups.

 **DKK 1,607,500**



All grants



Social area

Grant recipient	Grant approved for	Grant in DKK
The association Childhood Without Violence	Operational support 2024–2028	32,000,000
Sankt Lukas Stiftelsen (hospice and care centre)	Furniture and equipment for Lukashuset, a hospice for children and young people	25,000,000
The association Childhood Without Violence	Association activities 2024–2026	18,000,000
ADHD Centre	Operational support 2025–2027	17,100,000
Region Hovedstadens Psykiatri (mental health services in the Capital Region of Denmark)	VIA Family 2.0 – holistic family support initiative	14,982,000
The Danish Consumer Council THINK	Genvej (shortcut) – platform for parents providing information about their child's digital life	12,000,000
The Danish Committee for Health Education	BASAL – wellbeing initiative for pupils in lower secondary education	10,000,000
GirlTalk	Sisterhood 3.0 – wellbeing initiative for young girls	6,850,000
The Mary Foundation	Fri for Mobberi (free from bullying) 2024–2027	5,987,000
Bedre Psykiatri (better psychiatry)	Expansion of children's support groups in 8 municipalities	5,000,000
Region Hovedstadens Psykiatri (mental health services in the Capital Region of Denmark)	SAFIR Live – implementation of the initiative for families affected by mental illness	4,460,000
Foreningen Spiseforstyrrelser og Selvskade (the Danish national association for eating disorders and self-harm)	Counselling for children, young people and their families	4,000,000
Danish People's Aid	Christmas aid 2024	4,000,000
Danish Red Cross Youth	Initiative for children and young people in secure residential institutions	4,000,000
The Mary Foundation	Backpacks for children at shelters in Denmark, Greenland and the Faeroe Islands	3,730,500
University College Absalon	Bro til Bedre Børnesamtaler (bridge to better conversations with children) – preliminary project	3,686,000
The association Det Sociale Netværk (the social network)	Operational support 2025–2028	3,632,000
Department of Forensic Medicine, University of Copenhagen	The lost children: forensic screening of children	3,400,000
Danish People's Aid	Holiday camps 2024 and 2025	3,150,000
The association Skyggebørn (shadow children)	Grief support groups for children and young people	2,665,000
Fonden Mødrehjælpen (mothers' aid foundation)	“Out of the Shadow of Violence” treatment programme	2,525,000
Save the Children Youth	The “Barnets Ven” (child's friend) mentoring project in five towns in Jutland	2,338,000
SAVN	Support groups for children of prisoners	2,285,000
Danish Red Cross Youth	Holiday camps 2024 and 2025	1,895,000
LOKK – National Organisation of Women's Shelters	Children subjected to violence in the family law system	1,730,000
Foreningen Spiseforstyrrelser og Selvskade (the Danish national association for eating disorders and self-harm)	Family programme for families with children affected by eating disorders	1,660,000
Børns Vilkår (The Children's Rights Organisation of Denmark)	Knowledge gathering on children of parents with mental illness	1,500,000
Danish People's Aid	Starting school support 2024	1,500,000
HOME-START Denmark	Operational support 2025–2026	1,500,000
Blue Cross Denmark	Holiday camps 2024 and 2025	1,500,000
Fonden Mødrehjælpen (mothers' aid foundation)	Christmas aid 2024	1,400,000

Grant recipient	Grant approved for	Grant in DKK
Blue Cross Denmark	Christmas aid 2024	1,300,000
Ungdomsringen (the youth ring)	Fælles om Livet – Wellbeing initiative for children and young people	1,150,000
Department of Psychology, Aarhus University	The Cool Kids anxiety treatment programme – development of visual elements	1,048,000
Danish Red Cross, Asylum Department	NATURLig trivsel – Nature initiatives and learning programmes at Jelling asylum centre	1,000,000
Danish Red Cross	Christmas aid 2024	1,000,000
The Salvation Army	Christmas aid 2024	1,000,000
Danish Red Cross	Holiday camps 2024 and 2025	1,000,000
Landsforeningen Talentspejderne (the talent scouts)	Mentoring programme for vulnerable and disadvantaged young people in 12 new municipalities	750,000
Børnesagens Fællesråd (joint council for child issues)	Grants for leisure activities, confirmations and Christmas	450,000
Pårørende Netværket – Misbrugsportalen (network for relatives – the addictions portal)	Christmas aid and other support for families living with addiction	300,000
The association Enestående Forældre (single parents)	Holiday and Christmas grants for financially disadvantaged single parents and their children	300,000
LEGO Medarbejdernes Jubilæumslegat (staff anniversary grant)	Funding for social projects, etc.	270,000
Bryd Tavsheden (break the silence)	Counselling for children and young people subjected to violence	150,000
KIT (integration service of the churches)	Christmas aid 2024	150,000
Café Parasollen Vejle, Social work of the YMCA	Staff support for volunteers in activities	150,000
Hammel Neurorehabilitation Centre	Playground and adventure course for children and young people	150,000
The Mary Foundation	Evaluation of the “Backpacks for children at shelters” initiative	150,000
The TrygFonden Family House	Furnishing of communal areas and family rooms	150,000
Fulton Fonden (foundation)	Safety equipment for Fulton Energi (training ship)	150,000
Lykkeliga (the happiness league)	Friendship concept for children and young people with developmental disabilities	150,000
For Lige Vilkår (for equal opportunities)	Networking programme for families with children with disabilities or chronic illnesses	150,000
Parasport Denmark	Tumbling Stars – sports programme for young children with physical disabilities	150,000
Forældre Fonden (parents' foundation)	Counselling for vulnerable single parents	150,000
Blue Cross Denmark	Stjernestunder (magnificent moments) – aftercare for disadvantaged children	150,000
Save the Children Denmark	Transportation and catering for voluntary social activities	150,000
Børnesagens Fællesråd (joint council for child issues)	Non-firmation and confirmation grants 2025	150,000
Landsforeningen for PTSD-ramte og pårørende (the national association for people affected by PTSD and their relatives)	Conference on trauma reactions in children and young people	118,500
BogSpiloppen (the book scamp)	IT system for the registration of books	115,000
Børns Vilkår (The Children's Rights Organisation of Denmark)	Evaluation of the ‘Kh Børnene’ project	114,500
Caritas Denmark	Christmas aid 2024	100,000
Børns Voksenvenner (children's adult friends)	Mentors for disadvantaged children and young people	100,000
The association Be Free	Events and activities in disadvantaged residential areas	70,000
Fonden for Socialt Ansvar (social responsibility foundation)	Study on the role of civil society in preventing negative social control	69,000
The association Piece of	Specialist violence-related work with children in shelters	55,000
Danish Childhood Cancer Foundation	RESPECT rehabilitation programme for children and young people with cancer	50,000
The association Landslejr for børn og unge med høretab	National camp for children and young people with hearing loss	50,000
The association Sport ‘n’ Charity	Digitisation of training diary for children with cancer	50,000
Festivand	Festival for physically and mentally disabled young people	40,000

Grant recipient	Grant approved for	Grant in DKK
Diversity Works	Social activities for ethnic minority women and their children	40,000
The association Børnelejren (children's camp) on Langeland	Operation and maintenance of Søgård Hovedgård	35,000
Aflastningstjenesten i Esbjerg og Varde (respite care)	Respite care for relatives of the seriously and terminally ill	30,000
Settlementet Vesterbro (foundation)	Learning programme for young people without education or employment	30,000
Meta Marie-Hjemmets Venner (friends of the Meta Marie Home)	Wheelchair for outings for nursing home residents	27,000
Fonden Menighedsplejen i Danmark (church care foundation)	Christmas aid 2024	25,000
Børn & Unges Mærkesager (children & young people's key issues)	Non-firmation and confirmation food for disadvantaged families 2025	25,000
Sommerskole Tasiilaq (summer school in Greenland)	Holidays for children and young people	25,000
Fonden Mødrehjælpen (mothers' aid foundation), local association, Haderslev	Social activities for families and children	25,000
Nørremarkskirkens Menighedspleje (church aid)	Christmas aid 2024	25,000
The association Ønskejul (a Christmas to wish for)	Christmas aid 2024	25,000
BROEN Mariagerfjord	Sports and leisure memberships	20,000
The Danish Prison and Probation Service	Purchase of Christmas gifts for the children of inmates	5,000

Education

Grant recipient	Grant approved for	Grant in DKK
Experimentarium	“Super-Krop!” (Super body) – storytelling and learning for children	2,990,000
FIRST Scandinavia	Hosting of the FIRST LEGO League Open European Championship 2024	1,000,000
Students of educational theory and practice	112 student travel bursaries	560,000
Jelling Heritage	“Jernbyrd Danmark år 966” (iron used as a burden of proof in medieval justice, Denmark, 966 AD) – production of teaching material	150,000
Diversity Works	Homework café for children from an ethnic minority background	150,000
Danish Cancer Society, Cancer research centre	DNA game: Educational game about cancer for children and young people	150,000
Inge Lehmann Skolen (school)	Teaching materials for recently established school for gifted children	150,000
Alkohol og Samfund (alcohol and society)	Awareness campaign for young people	150,000
UWC Danmark	2024–2026 cohort being sent out	100,000
The association DrugRebels	Substance abuse awareness campaign for pupils and parents	98,000
University College South Denmark	Scholarship scheme for students of educational theory and practice at UC SYD	90,000
The Danish Youth Association of Science (UNF)	UNF's ScienceCamps 2024 for children and young people	50,000
Hjørring Gymnasium and HF programme	Language camp 2025 for young students	20,000
International Medical Cooperation Committee	Training seminar for volunteer teachers	19,800
Børns Rettigheder (children's rights)	Distribution of educational materials on children's rights	9,000

Cultural area

Grant recipient	Grant approved for	Grant in DKK
The association Kunst ud til Folket (bringing art to the people)	Cultural dissemination to children in rural areas	1,400,000
The Royal Danish Collection	“KONGEBARN” – exhibition at Koldinghus	1,000,000
ReMida Center Jelling, Vejle Municipality	Refurbishment of buildings	1,000,000

Grant recipient	Grant approved for	Grant in DKK
Vejen Garden (marching band)	New uniforms for Vejen Garden	150,000
Vejle Provstiudvalg, Ungdomspræsteriet (Vejle deanery committee, youth ministry)	Den Lave Højskole (the low folk high school) – folk high school evenings for young people	150,000
Diocese of Viborg	Podcast series for use in confirmation preparation	150,000
Orgelklubben (the organ club)	Operational support for the secretariat	150,000
FrikirkeNet, etc.	“Let's talk about faith” – launch of discussion project	100,000
Museum Sydfyn (art museum)	The “Underdanmarks tavse skæbner” (the silent voices of Denmark's underprivileged) exhibition	100,000
The Vejle Museums, Vejle Art Museum	The “Hvor livet begynder” (where life begins) exhibition	96,000
Danish String Quartet	DSQ Academy 2024	75,000
Dressurens Venner (friends of dressage)	Dressurens Venner Cup 2024 for children and young people	70,000
YMCA and YWCA in Denmark	YMCA and YWCA's Children's festival 2024	60,000
Meridiano Teatret (theatre)	“Jeg ser dig” (I see you) – play about children's loneliness in a digital world	50,000
Ødsted Naturlegeplads forening (nature playground association)	Establishment of a nature playground	50,000
Danish Schools of Music and Culture	Music school days at Tivoli 2025	50,000
The association Gadeteater i Skolegården (street theatre in the playground)	Plays performed at schools	50,000
ArtWeek Kerteminde	ArtWeek Kerteminde	50,000
Landsorganisationen Musik & Ungdom (national music & youth organisation)	Orchestra festival 2025 for children and young people	40,000
Di Heslige Slønglers Klup (the hideous scoundrels' club)	Sløngeldage 2025 – 10th anniversary – celebration of Ole Lund Kirkegaard's authorship	40,000
Danseteatergruppen Fuldmåne (the full moon dance theatre group)	“Løfter Blikket” (Looking up) – devotion to dance at Himmelske Dage (heavenly days public forum)	40,000
The association Aabenraa GospelFamily	Upgrading of equipment for hosting school concerts	30,000
Det danske Ungdomsensemble (the Danish youth ensemble)	Summer tour 2024 – classic concerts	30,000
Den Almennyttige Fond for Psaligrafisk Kunst (the non-profit fund for psaligraphic art)	“Flying Trunk – Stories We Share” – storytelling for children and young people	30,000
Akademisk Kor Århus (academic choir)	“Frydeligt med jubelkor!” (joyful with a choir of jubilation) – 40th anniversary concerts	30,000
JazzDanmark	The Jazzdalen 2025 summer festival for children and young people	25,000
Ensemble Midtvest	Messias 2024 – concert at Egtved Church	25,000
The Hans Christian Andersen Parade players' association	“Et godt humør” (a good mood) – cultural project for physically and mentally disabled people	25,000
Scene N	BeTween – International Youth Theater Festival	25,000
The association Ungklang	Concerts and sing-alongs at schools and institutions	25,000
Landsorganisationen Musik & Ungdom (national music & youth organisation)	Vesterlund Musikkursus 2025 (music course)	20,000

Locally – Billund

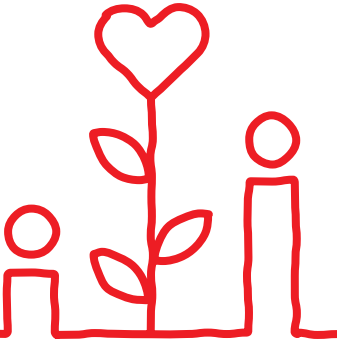
Grant recipient	Grant approved for	Grant in DKK
Talent Billund	Activities 2024–2027	4,800,000
Viadukhallen Filskov Kultur- og Aktivitetshus (culture and activity centre)	Renovation of Viadukthallen	2,500,000
Mark Museums of Billund Municipality	MarkMobilen – mobile history universe for schoolchildren	1,607,500

Grant recipient	Grant approved for	Grant in DKK
Stenderup-Krogager Invest ApS	Establishment of a meeting point in the town centre	1,000,000
Grindsted Rideklub (riding club)	Renovation of roof	1,000,000
Billund Kulturskole (cultural school)	New uniforms and instruments for LEGOLAND® Billund Garden marching band	893,000
Fonden Huset Mølgaard	Establishment of a daycare service for people with disabilities	500,000
Bindeballe Købmandsgaards Fond	New kitchen	450,000
Billund Erhverv (business)	Apprentice and student network in Billund Municipality	300,000
Café Jydepotten, Grindsted	Child and family work with disadvantaged families	200,000
Billund Sports Association, Padel Klub Billund	Installation of roof/canopy over padel courts	150,000
Billund Municipality	“Tidsreisen – Hejnsvig til alle tider” (Time travel – Hejnsvig through the ages) – marked trail in and around Hejnsvig	150,000
Skulpturpark Billund (sculpture park)	“Sommerfugleskoven – et requiem” (butterfly forest – a requiem) – new installation in the park	150,000
Plejefamiliernes Landsforening (the national association of foster families)	“Livets Farver” (the colours of life) – family day for foster families in the Southern Denmark region	150,000
The self-governing institution Naturrum Sdr. Omme (natural spaces)	Solar panel installation for Naturrum Sdr. Omme	150,000
Det Flyvende Teater	“KUNSTBULANCE 2.0” – theatre visit to schools	150,000
Stenderup-Krogager Leisure and Cultural Centre	Furnishings for multi-room for children and young people	150,000
Billund Kulturskole (cultural school)	LEGOLAND Billund Garden (marching band) 2025	150,000
Billund Erhverv (business)	“Billund KarriereTour 2024” (careers tour) – study day for students	145,000
Centerrådet Ommecenter (centre council)	Bicycles for nursing home	140,000
Billund Handelsforening (trade association)	Shuttle bus service 2024	125,000
Billund Sports Association	Events in connection with Billund Sports Association’s 120th anniversary	120,000
Magiske Øjeblikke (magical moments)	Magic workshops for children and young people with disabilities in Billund Municipality	110,000
Grindsted GIF Fodbold (football club)	Skolernes Aktivetsdag (schools’ activity day) 2025	110,000
Filskov FDF	Scout hut for the FDF scouts	100,000
Bo og Støtte (residence and support), Billund Municipality	Sensory-stimulating art for residential institution	75,000
Danish Red Cross	“Venner Viser Vej” (friends show the way) – Excursion for refugee families	72,000
Filskov Friskole og Børnehave (independent school and kindergarten)	Wheelchair lift for after-school programme	56,500
Café Jydepotten, Grindsted	Christmas aid for families with children	50,000
Vestre Skole, Billund Municipality	Pump track	50,000
Computer Caféen, Billund	Purchase of computers	50,000
Relay for Life Billund	Rental of tents, hall, etc. for Relay for Life	50,000
Odense Jazz Orchestra	JAZZmin – concert for schoolchildren in Billund Municipality	50,000
Grindsted Gymnastik & Idrætsforening, Fodboldafd. (gymnastics & sports association, football section)	Activity playground for children and young people in connection with the International Teqball tournament	47,000
Omme Plejehjem (nursing home), Billund Municipality	Visit from dementia clowns to Omme Plejehjem	44,880
Grindsted Revyen ApS	Grindsted revue for the sick and socially disadvantaged	42,000
The Why Foundation	Documentary screening and debate at Grindsted Kino cinema for school children	40,000
Billund Plejehjems Venner (friends of Billund Nursing Home)	Furnishings and song books for the nursing home	40,000
Grene Sogns Menighedsråd (Grene parish council)	Church events 2024	40,000
Save the Children, Billund branch	Summer camp for disadvantaged children in Billund Municipality	35,000
School children on the Artech Innovators team	Travel bursaries for participation in the FIRST LEGO League finals in Houston, USA	30,000

Grant recipient	Grant approved for	Grant in DKK
‘Welcome to Billund’ flag	Flag at the approach roads to Billund	27,000
Grene Sogns Menighedsråd (Grene parish council)	Parish collection for the benefit of DanChurchAid	25,000
Forlaget Læselyst (publisher)	Publication of a book on modern church art, including Billund Church	25,000
WeCare support association	Christmas aid for disadvantaged families with children in Billund Municipality	25,000
Vennekredsen Sydtoftens Plejecenter (friends of Sydtoften nursing home)	Sound system	24,900
Brugerrådet Lindegården (users’ council)	Furnishing of activity room	22,000
Revysangens Genklang (echoes of revue songs)	Senior entertainment in Billund Municipality	20,000
Stenderup Parish Council	Telecoil in church hall	19,500
Kompasset (transitional care unit), Billund Municipality	Acoustic wall art for communal areas	18,000
Billund Sports Association	Upgrade of beach courts	15,000
Billund Kunstforening (art association)	Transportation of artworks, talks, etc.	15,000
Action Kids – children in motion	Expansion of a physical activity concept for kindergarten children in Billund Municipality	11,580
Danske Seniorer (Danish seniors), Grindsted	Purchase of IT equipment	10,000
Grindsted-Billund Soroptimistklub (soroptimist club)	Event in conjunction with “Move the World”	8,000
Billund – Vorbasse Selvhjælp (self-help group)	Holiday cottage getaways for vulnerable community members	5,700

Fundraising shows

Grant recipient	Grant approved for	Grant in DKK
Danish Cancer Society	Knæk Cancer 2024 (stop cancer)	3,000,000
Danmarks Indsamling 2025	Danmarks Indsamling 2025 (humanitarian aid projects)	3,000,000
The Danish Heart Foundation	Hjertegalla 2024 (heart gala)	750,000



Koldingvej 2
DK-7190 Billund
+45 2687 0000
olekirksfond.dk

